



# The Audible Release

## October was an exciting and busy month

By Jen Gantzer, DC, MS, FACN, DACBN, LAc



Golf Tournament & Chiroday at the Capitol

Thank you to all our golf tournament sponsors and team players; see pg 2, 3, 13, 14 for golf pictures and a list of everyone who contributed including awards and raffles. Chiroday in Tallahassee for

our annual lobbying event was a success as well; we met with 7 legislative offices and 3 legislators and had 3 chiropractic students join us including our board ambassador.



Representative Chaney and PCCS/SACA



Representative Latvala and PCCS/SACA



L - R: SACA legislative rep N.Rennie, NUHS ambassador A.Burns, SACA president S.Langheier, FCA Alternate C.Langheier, PCCS president J.Gantzer, PCCS treasurer T.Hughes, FCA Director M.Wieland.



Representative Brandes and PCCS/SACA

**VISIT US ONLINE AT [PCCSCHIRO.ORG](http://PCCSCHIRO.ORG)**

**Join Us Tuesday October 26th for the joint meeting with HCCS & NSCS details on pg-6. Guest Speaker Jack Hebert**

## 26<sup>th</sup> Annual Golf Tournament- by Tom Hughes, DC

The 26<sup>th</sup> Annual Golf Tournament was held on Thursday, October 7<sup>th</sup>. Once again, we played at Bardmoor Golf & Tennis Club in Largo. The weather was great and both players and sponsors had a great day. It was wonderful to see everyone again! 70 golfers competed for the coveted PCCS Championship as well as other fun and exciting contests. The official results are below:

### 1<sup>ST</sup> PLACE (55)

Walter Reynoso  
Jared Maddox  
John Daly  
Noelia Lopez

### 2<sup>ND</sup> PLACE

Chris Waters  
Dave Clark  
Carmine Chiocciariello  
Christian Pipas

### HONESTY AWARD

Ryan Hohl  
David McKenna  
John Blaseser  
Joseph Regolado

### CLOSEST TO THE PIN

Men – Sponsored by Neurology & Physical Therapy Centers of Tampa Bay, won by Zac Jora

Women – Sponsored by Revenue Recovery Firm, won by Nikki P.

CLOSEST TO THE SPINE – Sponsored by PCCS, won by Dave Clark

### LONGEST DRIVE

Men – Florida Law Doc, won by Mike Cordero

Women – Florida Chiropractic Association, won by Nikki P.

STRAIGHTEST DRIVE – Sponsored by SimonMed Imaging, Won by Ryan Hohl

\$10,000 CASH FOR A HOLE-IN-ONE ON #11 – Sponsored by PCCS, no winner!

PUTTING CONTEST – Dave Sandefur. He missed sinking it by only 1 foot 9 inches!

DRIVING RANGE – Standard Process

CORPORATE SPONSORS – Demesmin & Dover, Landau & Associates

TEAM SPONSORS - Tampa Bay Imaging

### HOLE SPONSORS

Akumin	Joseph Spine Institutes
Diagnostic Imaging Consultants	MRI Associates of Palm Harbor
Florida Surgical Consultants	Tower Radiology
Gulf Coast MRI	Waypoint Orthopaedic Care

PHOTOGRAPHY– Thomas Boland, MD, DMD

### AUCTION ITEMS

Flats Monster Inshore Charters – Tyler Wallerstein  
Bay Area Orthopedic Specialists  
Paradise Pure CBD  
Painting Bardmoor #10 – Vanda Sucheston-Hughes

### RAFFLE SPONSORS

Coastal Medical Imaging  
Billy Berkey –

- Treasure Island Athletic Club

Florida Spine Institute  
DeLoach Hoffstra & Cavonis  
Skinspirations  
Love Health Dr. Abby Perone (member)

- Rocktape

Holiday Inns & Suites –

- Indian Rocks Beach
- Clearwater Beach

Exception Skin – Sue Thompson  
Attorneys Karikas & Kasaris  
Elite home care of Florida, LLC  
Looks & Company “The Salon

Proceeds from this event help support the general operation of the Society as well as raise money for our PAC. The total amount raised for our PAC is still being determined but needless to say it is more than we had prior to the tournament!

The PCCS Board of Directors and members would like to thank all the players, sponsors, raffle contributors and volunteers for making the event a success.

# PCCS GOLF TOURNAMENT



# P H O T O S



# THE RADIOLOGIST'S VIEW



## DO YOU PRACTICE IN “TOONTOWN”?

A fundamental principle to understand in order to interpret a diagnostic image is that the image represents a two-dimensional depiction of a three-dimensional object. Everyone knows that....or so you would think! However, forgetting this simple concept is a leading source of error and misinterpretation, even among radiologists. Why is this such a problem!?

Unless you practice in “Toontown” (the region where the animated characters lived, in the movie “Who Framed Roger Rabbit”) your patients are three-dimensional. This requires two views at right angles be performed for proper radiographic evaluation of the anatomy. In some areas where the anatomy is more complicated, such as the spine, ribs and many extremities, more than two views are needed. This is especially true in cases of suspected fracture. Unless the x-ray beam is parallel to a fracture line, it will not be seen. For example, a fracture oriented in the coronal plane will not be seen on a frontal projection.

A 5cm soft tissue mass was seen in the apical region of the left lung on a frontal radiograph. The usual thought process is to describe the lesion and come up with a differential, taking into account the clinical presentation. But not instinctively thinking about the 3D concept leads one to forget the possibility that the lesion may not be in the lung at all, leading to unnecessary testing and patient anxiety. In this case, the 5cm “lung” mass was actually a lipoma on the patient’s back. In another instance, a 13 year old female was scheduled for a biopsy of a hilar mass diagnosed by a resident radiologist only to have the chief radiologist addend the findings realizing that the “mass” was,

in reality, the young ladies hair braid. On a lateral spinal radiograph a doctor suspects metastatic disease when a radiopaque lesion was thought to reside within the vertebral body. After further testing, the lesion was found to be an osteophyte projecting laterally and seen en face. Another common error is to suspect a radiolucent lesion in a bone when in fact it was merely a superimposed tuberosity. Many more examples can be described, but I think you get the point.

It is not difficult to overcome this common source of diagnostic error: First, never do a “scout” film, a single view to evaluate an area “just to be sure everything is all right”. This is extremely misleading and an improper use of ionizing radiation. Secondly, if an abnormality is seen on one projection, try to find it on other views to determine the proper location. This is similar to GPS coordinates. If it cannot be seen within the body on the views that are available, remember to check the soft tissues of the patient, including the skin. Thirdly, exclude artifacts that may create the appearance of an abnormality. Always think of the three-dimensional principle when evaluating a radiograph.

CT and MRI have a similar principle called volume averaging. The viewed image represents a thickness of tissue that is usually several millimeters and may include a part of an adjacent structure. For instance, an axial image near the edge of an intervertebral disc may include a portion of the pedicle and be misinterpreted as a herniation or osteophyte. Again, it is equally important to keep the 3D principle in mind when evaluating advanced imaging.

Remember! When looking at a diagnostic image, THINK 3D.

Terry D. Sandman, DC, MPH, DACBR  
drtsandman@aol.com

© 2021 by Terry D. Sandman

# Board of Directors

## President:

Dr. Jennifer Gantzer  
O-727-823-6262  
drjgantzer@gmail.com

## Past President:

Dr. Jordon VanderVeen  
O-727-800-9928  
drj@nexuschirofl.com  
3348 Tyrone Blvd  
St Petersburg, FL 33710

## Secretary:

Dr. Woody Brown  
O-727-518-1967  
F-727-518-1986  
woodybdc@gmail.com  
520 1st Ave SW  
Largo, FL 33770

## Treasurer:

Dr. Tom Hughes  
O-727-341-1234  
F-727-685-0694  
drhughes@hughes-chiro.com  
214 Pasadena Ave S.  
St. Petersburg, FL 33707

## FCA Director:

Dr. Mark Wieland  
O-727-623-0164  
mwieland@nuhs.edu  
6698 68th Ave N.  
Pinellas Park, FL 33781

## FCA Alternate:

Dr. Cris Langheier  
PO Box 1287  
Tarpon Springs, FL 34688  
O-727-943-7354  
contact@langheier

## Directors:

Dr. Al Comey  
O-727-581-3800  
F-727-581-3811  
drcomey@comeychiropractic.com  
10225 Ulmerton Road  
Suite 2A  
Largo, FL 33771

## Dr. Anthony Stanganelli

O-727-531-4444  
F-727-530-7195  
drstanganelli@gmail.com  
1000 Belcher Rd S., A5  
Largo, FL 33771

## Dr. Mark Lipkin

O-727-787-4787  
Mark@LipkinChiropractic.com  
2595 Tampa Rd.  
Suite P  
Palm Harbor, FL 34684

## Dr. Jason Miller

O-727-384-6168  
F-727-384-6158  
millerchiro@tampabay.rr.com

## Dr. Daniel Roode

O-727-544-3330  
F-727-544-3222  
Roode.dc@gmail.com  
6231 66th Street North  
Pinellas Park, FL 33781

## The Audible Release

is published 10 times per year  
and unlimited downloads available online.

Dr. Jason Miller: Editor

The Audible Release provides news and information that is both educational and informative to the chiropractors and their associates in the Pinellas County area.

Society news, staff changes, personal announcements, photos and success stories are welcome. Articles about chiropractic procedures and issues concerning the practice of chiropractic should be submitted to the editor. Advertising inquires should be made to the publisher or visit us online at [www.pccschiro.org](http://www.pccschiro.org)

The deadline for ads and articles is the 7th of every month.

P.O. Box 7515  
Seminole, FL 33775-7515  
[www.pccschiro.org](http://www.pccschiro.org)

"LIKE" the *Pinellas County Chiropractic Society* on Facebook



Google Maps  
Find a PCCS  
Chiropractor

## Executive Director

Jennifer Comey

P.O. Box 7515, Seminole, FL, 33775-7515

email: [ed@pccschiro.org](mailto:ed@pccschiro.org)

# Calendar of Events

## MARK YOUR CALENDARS

Monthly Dinner Meetings  
In-Person & Virtual for 2021

### Join us In-Person

Last Tuesday of the Month

### Join us Virtual via Zoom

[www.pccschiro.org/annual-calendar](http://www.pccschiro.org/annual-calendar)

Marriott Crafted Plate  
12600 Roosevelt Blvd N  
St. Petersburg, FL 33716  
6:30-8:30 pm

*Dinner/Speaker at 7 pm*

*Please RSVP to Evite for dinner attendance*

## October

7th – Golf Tournament

19th – Chiro Day; Trip to Tallahassee

26th - Joint Meeting with HCCS

*Guest Speaker: Jack Hebert FCA Lobbyist*

## November

No Dinner Meeting; Happy Thanksgiving

## December

4th – PCCS Holiday Party Clearwater Beach  
Rooftop Marina Cantina 7-11PM

Oct no board meeting, 9th is Annual Retreat

NOV Board meeting 9th 12:30pm Zoom

### PCCS PAID MEMBERS 2021

“Thank you to the chiropractors below that are supporting the PCCS and PAC in 2021”  
See page 15 for the 2021 Membership Application if you have not already mailed it in.  
Contact Jennifer Comey, Executive Director, with any questions regarding membership at [ed@pccschiro.org](mailto:ed@pccschiro.org)

We appreciate your support of our society which works hard to serve & represent you.  
Names listed in BOLD have donated to the PAC  
In their membership dues  
(Political Action Committee)

PAC donations are additionally recognized on the member directory with a “PAC Star”

Woody Brown, D.C.	Anthony Stanganelli, D.C.
Albert Comey, D.C.	Daniel Strauss, D.C.
D.A.C.N.B.	James Strubbe, D.C.
Charles Crandall, D.C.	Scott Thorpe, D.C.,
Frank Farkas, D.C.	D.A.C.B.R.
Jennifer Gantzer, D.C.	Lorraine Thorpe, D.C.
MS, D.A.C.B.N.	Maria Young, D.C.
FACN, LAc	Jordon Vanderveen, D.C.
Albert Gadomski, D.C.	Monte Venis, D.C.
Kevin Granger, D.C.	Karen Wolstein, D.C.
Rudy Heiser, D.C.,	Mark Wieland, D.C.
D.A.C.B.R.	Steve Wyckoff, D.C.
Clay Hopkins D.C.	<b>Welcome 2021</b>
D.A.B.F.P.	<b>New Members</b>
Tom Hughes, D.C.	Brian Brill, D.C.
Julie Hunt, D.C.	Megan Burgess, D.C.
Russell Janssen, D.C.	Kevin Gallagher, D.C.
Jaime Kean, D.C.	Carlo Guadagno, D.C.
Ken Kozlowski, D.C.	CCSP, ICSP, FICC
Cris Langheier, D.C.	Michelle Jourdan, D.C., MS
Andrew Levin, D.C.	D.A.B.C.I.
Mark Lipkin, D.C.	Sarah Kelly, D.C., LAc
Mark McCutcheon, D.C.	Nelson Klahr, PhD
Karen McGlashan, D.C.	Peyton Lacy, D.C.
Erica Meister, D.C.	Juliet Marvenko, D.C.
Jason Miller, D.C.	Steve Nickse, D.C.
Samuel Myers D.C.	James O'Neill, D.C.
G. Stan Pierce, D.C.	Addison Ozakyol, D.C.
Samuel Richards, D.C.	Abby Perone, D.C.
Michael Roberts, D.C.	CES, CF-11
Marc Rogers, D.C.	Fouad Raad D.C.
Daniel Roode D.C.	Joshua Richardson, D.C.
David Sandefur, D.C.	<b>Mandi Rosenquist, D.C.</b>
Terry Sandman, D.C.	Erin Wadelin D.C.
D.A.C.B.R.	MS, LAc
Rhonda Schroeder, D.C.	Tom Young, D.C.
	D.A.C.B.S.P.

# PCCS Sponsors

\* Denotes New Sponsor



## GOLD

\* Coastal Medical Imaging.....15

Learn how you can become part of  
the biggest and most active local society in the state  
YOU can become a Sponsor  
Contact Jen Comey today for more information at  
ed@pccschiro.org



## BRONZE

Central Imaging Open MRI .....9  
J. Stanford Morse, P.A. ....9  
FL Legal Group.....12  
Akumin .....9  
Saint Pete MRI.....8  
Susanti Chowdhury, M.D. ....8  
Tampa Bay Imaging .....10  
Thomas Boland, MD, DMD.....10



## SILVER

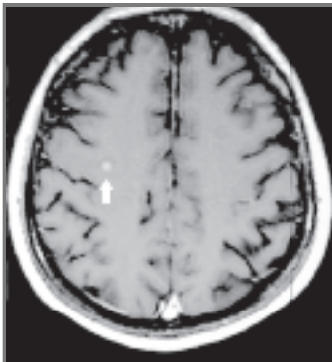
SimonMed.....7  
\* Demesmin & Dover Law Firm .....10



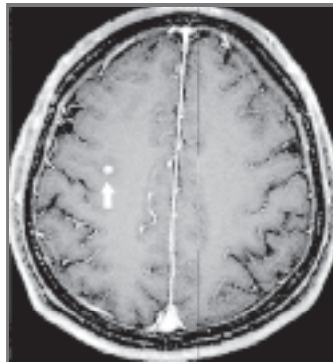
DEDICATED SPECIALIST  
FOR PERSONAL INJURY



## Why Choose 3T MRI



1.5 T MRI



3T MRI

Nodules observed by the 3.0 T MRI were brighter than when observed by the 1.5 T MRI.

- Best quality images for the most accurate diagnosis
- Faster scan time for maximum patient comfort
- Better Resolution
- Beneficial for pathological conditions involving the brain, spine, and musculoskeletal system

**DONALD LEBLANC, D.C.,**  
Business Development

Cell: 813-753-8140  
donald.leblanc@simonmed.com

Scheduling Phone: 407-629-7160 | Scheduling Fax: 407-865-6047

SimonMed.com



# PAIN RELIEF

ADVANCED INTERVENTIONAL SPINE CONSULTANTS

Treatments are available for:

- Headache
- Facial pain
- Neck-Shoulder pain
- Back pain
- Herniated disc
- Reflex Sympathetic Dystrophy (RSD)



- Arthritis pain
- Sports injury
- Work-related injury
- Motor vehicle injury
- Any chronic pain
- Regenerative Injection Therapy (Stem Cell Replacement)



## 727-526-2771

Susanti Chowdhury, MD, PA

Two Locations to Serve You  
1945 East Bay Dr. Largo and  
6231 66th St. N. Pinellas Park

- Private Insurance
- Workers' Comp & Auto Accepted

Interested in  
being a Sponsor?

Your Ad  
HERE

**Saint Pete**  
**MRI & SLEEP**  
DIAGNOSTICS

750 94th Avenue N., Suite 206  
St. Petersburg, FL 33702

*Offering the Best quality images  
for your patients!*

- ◆ High Field & Wide Bore MRI
- ◆ CT (64 Slice) Ultrasound
- ◆ ECHO ◆ X-Ray
- ◆ In Lab & Home Sleep Study

Contact us today  
(727) 577-2220  
saintpetemri.com





WE ARE AKUMIN

We offer a range of imaging services to unlock the right diagnosis



MRI



CT



X-RAY



MAMMO

Board certified, multi-specialty radiologists  
Same day appointments and weekend hours  
All insurances accepted and competitive cash pricing

We offer Open and Upright Open MRI imaging exams for claustrophobic patients or those with limited mobility

Akumin has 14 diagnostic imaging centers across West Florida from Palm Harbor down to St. Petersburg

For a full list of locations and procedures offered visit [Akumin.com](http://Akumin.com)



**J. STANFORD MORSE, P.A.**

3131 66<sup>TH</sup> Street North, Suite #2  
St. Petersburg, FL 33710

Phone: 727.347.7737 Fax: 727.347.0179

**We Speak for the injured.  
We Speak for Their Families.**

If you've suffered a serious personal injury or loss of a loved one through another person's carelessness or negligence, call us. We'll listen. Then we'll get to work to help you recover for your loss.

*Motorcycle accidents  
Rear – end collisions  
Slip and fall  
Dog bite / injury  
DUI / Drunk driver*

*Hit and run accidents  
Pedestrian accidents  
Premises liability  
Wrongful death*



PHONE: 727. 347.7737  
WWW.INJURYLAWUS.COM

We are much more than just an MRI Facility

Central Imaging High Field



OPEN MRI



- Ultrasound and Digital X-Ray
- LQP's
- Complimentary Films or CD
- FREE Transportation for MRI Patients
- Most Health Insurances and W/C
- Experienced in PI's and liability claims

Call

727-381-4674

6101 Central Avenue  
St. Petersburg, FL. 33710  
APPT: (727) 381-4674  
FAX: (727) 341-1182

M  
R  
I

Open MRI Comfort, with High Field Quality Imaging

**Thomas J. Boland MD, DMD**  
*Board Certified*  
*Oral & Maxillofacial Surgery*

- TMJ
- Headaches
- Facial Pain
- Oral Surgery
- Dental Implants
- Facial Reconstruction
- Obagi Skin Care

Medical & Surgical Treatment of the TMJ

6540 4th Street North, Suite A  
 St. Petersburg, FL 33702  
 (727) 525-0155



*Also seeing patients in  
 Largo & New Port Richey*

- We accept most major insurance

**PCCS SILVER Sponsor**

854-MORE

**MILLIONS RECOVERED**

**DEMESMIN & DOVER**  
 — LAW FIRM —

**DEFENDING YOUR RIGHTS**  
**AGAINST THE INSURANCE COMPANIES**

PERSONAL INJURY PROTECTION  
 AUTO/TRUCK/BOATING ACCIDENT - SLIP & FALL ACCIDENT  
 MEDICAL MALPRACTICE - NURSING HOME ABUSE

**866-954-MORE** 6673

WWW.ATTORNEYSOFTHEINJURED.COM



**High Field, Short Bore MRI  
 & Spiral CT**

Service · Quality · Comfort

Tampa Bay Imaging is now a proud sponsor of the  
**Pinellas County Chiropractic Society**

Tampa Bay Imaging provides the highest degree of service and unsurpassed image quality in both Pinellas and Hillsborough Counties.

TBI is conveniently located at:



**PINELLAS**

7800 66th St. North Suite 106  
 Pinellas Park, FL 33781

Tel: (727) 545-9674 Fax: (727) 545-9454

**HILLSBOROUGH**

2700 West Dr. MLK, Jr., Blvd., Suite 130  
 Tampa, FL 33607

Tel: (813) 386-3674 Fax: (813) 386-0499

# Business Directory

## ATTORNEYS

### J. Stanford Morse, P.A.

Phone: 727-347-7737

[www.injurylawus.com](http://www.injurylawus.com)

### FL Legal Group

Phone: 813-221-9500

Philip A. Friedman, Esq., MBA

Email: [Inquiry@FLLegalGroup.com](mailto:Inquiry@FLLegalGroup.com)

<http://www.FLLegalGroup.com>

### Demesmin & Dover Law Firm

Phone: 866-954-6673

[www.attorneysoftheinjured.com](http://www.attorneysoftheinjured.com)

## CBD

### Paradise Pure CBD

Randy McMullen

813-300-8338

[paradisePureCBD@gmail.com](mailto:paradisePureCBD@gmail.com)

20% OFF the 1st order

## DENTAL

### Thomas J. Boland, MD, DMD

Board Certified Oral

& Maxillofacial Surgery

Phone: 727-525-0155

## DIGITAL X-RAY SALES

### Coastal Medical Imaging

Phone: 727-387-3110

[www.coastalmedicalimaging.com](http://www.coastalmedicalimaging.com)

## MEDICAL IMAGING

### Central Imaging High Field Open MRI

Phone: 727-381-4674

[www.CentralOpenMRI.com](http://www.CentralOpenMRI.com)

### Akumin

Boot Ranch 727-781-3888

Largo 727-531-5444

St. Pete 727-525-3800

## Saint Pete MRI

Phone: 727-577-2220

[www.saintpetemri.com](http://www.saintpetemri.com)

## Tampa Bay Imaging

Pinellas Park: 727-545-9674

Tampa: 813-386-3674

## SimonMed

Scheduling 407-629-7160

[www.simonmed.com](http://www.simonmed.com)

## INTERVENTIONAL SPINE

### Advanced Interventional Spine Consultants

Susanti Chowdhury, M.D.

Phone: 727-526-2771

## RADIOLOGISTS

### Diagnostic Imaging Consultants

Scott Thorpe, DC, DACBR

Rudy Heiser, DC, DACBR

Terry Sandman, DC, DACBR

Phone: (727) 579-2500

# PCCS Classified Ads

**EQUIPMENT FOR SALE:** Elite Stationary drop table \$450. Therapy Treatment Table \$75. Hydroculator \$125. Mytherm Diathermy \$350. Negotiable for quick sale. Please call Dr. Schroeder at (727) 804-3834 or email at [docschroeder@aol.com](mailto:docschroeder@aol.com)

**OFFICE BUILDING FOR LEASE** - Fully equipped Chiropractic office for lease or share on busy road in Oldsmar, FL Completely furnished with X-Ray facilities. Good opportunity for associate. For more info please e-mail [Rgolden19@aol.com](mailto:Rgolden19@aol.com)

**FREE TO A 2021 PCCS MEMBER:** Winco tables. They have imperfections on their tops. 2 - 14 X 17 rare earth green cassettes/screens and 3 - 10 X 12 of the same. Please contact Dr. Russell Janssen at 727-726-8822 or email at [backdr1@verizon.net](mailto:backdr1@verizon.net)

**FULLY EQUIPPED SHARED OFFICE SPACE** available for rent in a great St. Petersburg location. Please contact 727.638.8662 for more information.

**ADJUSTING/TREATING CHIROPRACTOR NEEDED IN CLEARWATER, FLORIDA.** Competitive Salary plus bonus. New graduates and experienced doctors are invited to apply. Must have a Florida License. For more information about this position please call Dr. G at 614-582-2135, you can also visit our website at <https://www.grangerhealth.com/>.

**The PCCS Board of Directors wants to express our appreciation and thanks for all the support that these sponsors have extended to the Chiropractic Profession.**



*IT'S NOT WHAT YOU SEE.....*

*IT'S WHAT YOU MISS!*

# TRUST THE EXPERTS



DIAGNOSTIC  
IMAGING  
CONSULTANTS

OPTIMIZE YOUR RISK ASSESSMENT PROTOCOL  
NO SHIPPING CHARGES  
TELERADIOLOGY COMPATIBLE  
STAT READS AVAILABLE  
INTERPRETATION OF X-RAY, CT, MRI IMAGES

5136 CENTRAL AVE. ST. PETERSBURG FL 33707

CALL TOLL FREE: (877)579-8800

Or Visit Us at: [WWW.DCRADIOLOGY.COM](http://WWW.DCRADIOLOGY.COM)



TERRY SANDMAN, DC, DACBR

SCOTT THORPE, DC, DACBR

RUDY HEISER, DC, DACBR

BOARD CERTIFIED RADIOLOGISTS



# PCCS GOLF TOURNAMENT PHOTOS



# PCCS GOLF TOURNAMENT PHOTOS



For a full view of the PCCS Golf Tournament Photos, <https://pccschiro.org/golf/>



**\$18,000.000 for a 2020 Imaging Direct Digital X-ray System**  
**After \$1,000.00 Manufacturer mail in Rebate**



The BEST Direct Digital X-ray system designed by Chiropractors for Chiropractors with over 40+ Chiropractic tools. View an image in 6-8 seconds, and a whole series in less than 5 minutes.

Install time of 2-3 hours and you are taking X-rays on your new Direct Digital system. Plus view images in multiple exam rooms.



**Call us today (727) 387-3310**

**Coastal Medical Imaging**

140 Island Way #154

Clearwater, FL 33767

Phone: (727) 387-3310



**[www.coastalmedicalimaging.com](http://www.coastalmedicalimaging.com)**



# Audible Release

The Pinellas County Chiropractic Society  
P.O. Box 7515  
Seminole, FL 33775-7515  
www.pccschiro.org

PRESORTED STD  
US POSTAGE PAID  
ST PETERSBURG FL  
PERMIT #746

## PERSONAL INJURY PROTECTION (PIP) ATTORNEYS

No Fees or Costs Unless We Recover Benefits For You

# FLLegalGroup.com



Hablamos Español -- Nous Parlons Français

Philip Friedman and the FL Legal Group team have represented many individuals and medical providers helping them protect their rights against the insurance companies.

**RECOVERED MILLIONS OF DOLLARS FOR PCCS MEMBERS, AND PROUD SUPPORTERS OF PCCS FOR A DECADE.**

**Philip A. Friedman, Esq., MBA**

### AREAS OF PRACTICE

- HEALTH CARE CLINIC COMPLIANCE
- PERSONAL INJURY (NO-FAULT)
- PIP
- IME
- EUO
- PERSONAL INJURY (BI)
- CIVIL LITIGATION
- INSURANCE LAW
- PIP BILLING COMPLIANCE
- FEE SCHEDULES
- SINKHOLE



813-221-9500

MAIN OFFICE - TAMPA

2700 W. DR. MLK JR. BLVD., SUITE 400, TAMPA, FL 33607